

# KIALLA CENTRAL PRIMARY SCHOOL NEWSLETTER

17/02/2015 Issue 3

Quality Education  
Rural Environment

Telephone: 03 5827 1373  
www.kiallacentralps.vic.edu.au  
kialla.central.ps@edumail.vic.gov.au

HOUSE POINTS WEEKLY WINNER  
FAIRMAID



## NEW AWARD

Phys. Ed. Award

TERM 1 ~ WEEK 3

Reinhardt  
Grade 6



## Stars of the Week

TERM 1 ~ WEEK 3

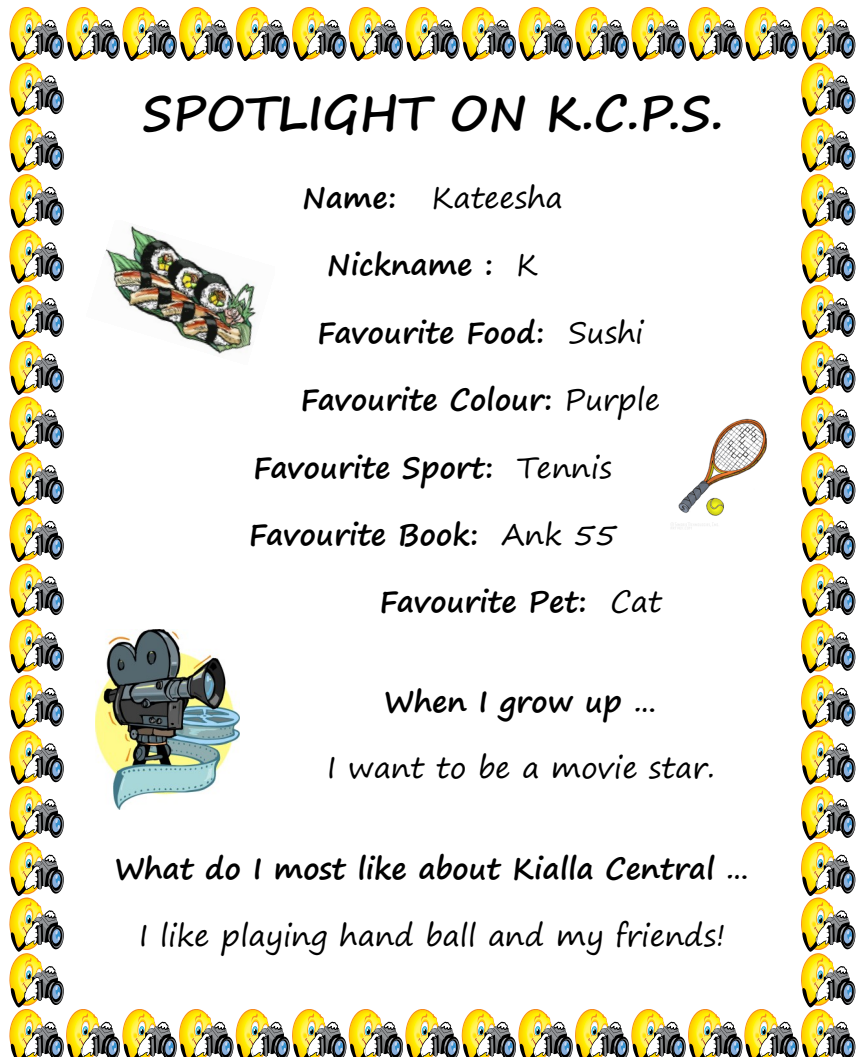
Callea ~ Grade 2

Ebony ~ Grade 5

Jarred ~ Grade 4



DATES TO REMEMBER	
Wednesday 18th February	
MARC Art Van	
NO SCHOOL FOR FOUNDATION STUDENTS	
Thursday 19th February	
Information Night & Presentation of 2015 School Leaders	
Wednesday 25th February	
MACC Library Van	
NO SCHOOL FOR FOUNDATION STUDENTS	
Thursday 26th February	
Census Day	



## SPOTLIGHT ON K.C.P.S.

Name: Kateesha

Nickname : K

Favourite Food: Sushi

Favourite Colour: Purple

Favourite Sport: Tennis

Favourite Book: Ank 55

Favourite Pet: Cat



When I grow up ...

I want to be a movie star.

What do I most like about Kialla Central ...

I like playing hand ball and my friends!

# Term 1 ~ Calendar of Events 2015

Monday	Tuesday	Wednesday	Thursday	Friday
16  7.30pm School Council Meeting	17	18 MARC VAN (Library)  NO FOUNDATION STUDENTS	19  6.00pm to 8.00 pm Information Night for families	20
23	24	25 MACC VAN (Art)  NO FOUNDATION STUDENTS	26 Census Day	27 10am Playgroup
2nd March  7.00pm Parents Club AGM & General meeting	3	4 MARC VAN (Library)	5	6  <b>CURRICULUM DAY</b>
9  <b>LABOUR DAY HOLIDAY</b>	10	11 MACC VAN (Art)	12	13 10am Playgroup K.C.P.S. House Athletics at school
16  7.00pm School Council AGM & General meeting	17	18 MARC VAN (Library)  4.00pm to 6.00pm ILP / KELPs & Foundation Interviews	19	20 Whole School Excursion International Sand Sculptors ~ Frankston
23 EGPSA Aths Championships Shepparton	24	25 MACC VAN (Art)	26	27 10am Playgroup  Early dismissal 2.15pm

**HOLIDAYS BEGIN ON FRIDAY 27TH MARCH 2015**

## Kialla Central Community Noticeboard

Make sure you check out our **Kialla Central Community Noticeboard** (located on the left hand side of our front office door) for upcoming events being held by the following local organisations:

**Kialla Central Primary School, Kialla & District CFA, Kialla & District Hall & Kialla Golf Club!**



On Sunday 15th February we hosted our annual **Bunnings BBQ** which is one of our major fundraisers for the year. It was quite a hot day and the first time we have had a Sunday. Business was constant from about 10.30am to 2.00pm. It is with great pleasure that I inform you that we raised **\$1,080** a great start to our fundraising efforts this year! Thank you to all of our helpers: **Dale McCully, Alan Keat, CJ De Silva, Peter & Tracy Blake, Paul Irwin, Henk Keyter, Wendy Kennedy, Ashlea Baker, Bob Scott, Michelle Farren, Lisa Garcia and Tracey Opie.**

I would also like to thank **Tasman Meats** who looked after us with a significant discount on our sausages.

On Thursday 19th February we are hosting our **2015 Information Night**. This is a great opportunity for parents/guardians to gain an insight into their child/ren's classrooms including: expectations, homework requirements and the general routines of their classroom. Our **2015 Information Books** will also be distributed.

Session times are as follows:

**5.30pm ~ Foundation/1/2**  
**Coralie Gamble**



**6.00pm ~ 3/4**  
**Ashlea Baker**



**6.30pm ~ 5/6**  
**Mitchell Zito**

Our **2015 Student Leadership Team** will then be presented with their badges and

certificates at 7.00pm to conclude our **Information Night**.



**Parents Club** had their first meeting on Monday 9th February. It was a very productive meeting with a range of fundraising and social activities being planned for the year. Our students will also benefit from the special events that have been organized for them including: student lunches, Mother's Day and Father's Day activities, allocated some of their funds to purchase resources for our students in the areas of Literacy, Maths and construction materials as well as continuing to host their annual events such as: our **Grade 6 Graduation** and **Whole School Christmas Lunch**.

**Parents' Club** put in an enormous amount of effort into organising these events and rely upon your support to make them successful. This year they are also adding a social element to some of the activities with a couple of family functions and a **Ladies Night Out** for our Mums and their friends. So stay tuned for more details.

Our **Parents' Club Annual General Meeting** is going to be held on **Monday 2nd March** at 7.00pm in the library. This will be followed by a general meeting. There is no expectation to take on the responsibility of an executive role, just come along and be part of the general committee. **Parents Club** is an important part of our school and adds value to the programs we offer our students.



Ryan Peace and Alanna Chapman

87 Delany Ave  
Bright Victoria 3741

Phone: 03 5755 1911  
Fax: 03 5750 1105



### DID YOU KNOW ...

Cutting onions releases a gas which causes a stinging sensation when it comes into contact with your eyes. Your body produces tears to dilute the irritant and remove it from your eyes.







**School Council** held it's first meeting for 2015 on Monday 16th February. We received a quote for our shade over our playground areas which came in at \$112,800. There are still a couple of quotes to come in but at this stage it appears to be out of our budget. I am seeking alternative options.

It is that time of year again when schools hold their **School Council elections**. We have 3 parent vacancies to be filled this year as their 2 year term as School Councillors draws to an end. Our retiring members are **Bob Scott, Joanne Robertson and Andrew Ryan**. Retiring School Councillors who still have children enrolled at Kialla Central are eligible to renominate for this year's elections. I would like to take this opportunity to sincerely thank Bob (President), Jo & Andrew for their efforts and support during their time on School Council.

Nomination forms are available at the office and need to be returned to school by **4pm Tuesday 23rd February 2015**. If you would like to discuss this role further please come and see me.

 Thank you to all of our families who have sent back their **paperwork** that they received in the holidays. We only have 5 families who still have their forms outstanding. Similarly, a large percentage of our families have made full or part payment of their **school levies**. This term we have a number of student activities that are covered in our excursions/incursions levy including: our Grade 5 & 6 Leadership program, our KCPS House Athletics Day, our East Goulburn Primary School Sports Athletics Carnival and we have an excursion planned for Friday 20th March.

Each year the **Shepparton News** does  a feature on all of the students starting school. This year they will be here on **Friday 27th February at 9.00am** to take photos of our Foundation students.

I have noticed that we have a few of our students not using the designated areas to enter and leave our school grounds. Could you please encourage your child/ren to enter and leave our school grounds by the following ways:

1. For those students directly out the front of the school and coming from down near the CFA / Kialla Hall need to come through the front entry, along the paved area past the flag pole and cross at the zebra crossing, past our roses and enter through the front gate.
2. Those students parked near the bus stop need to stay to the right hand side of our gate and walk along the grass to the path between the staff car park and the bike shed and follow the path to the front entry gate.
3. The south gate, at the end of our Library, is for parents/ guardians collecting their child/ren from Outside of School Hours Care or when our MARC Van is at school.

These measures are in place to keep all members of our school community safe. It would be appreciated, if you could assist us with this matter.

In this newsletter we have introduced a new feature called **Classroom WRAP**. It provides parents/guardians with a snap shot on what is happening in each of our classrooms. This week's feature is about writing. I look forward to receiving your feedback.

Debbie Humphries

Proud Principal of KCPS

## REMINDERS

Grade 5 & 6 permission notes for our Leadership Program - Thurs 19th Feb.



**Tennis Coaching with Luke Dixon**  
**Shepparton North Tennis Club**  
**ANZ Tennis Hot Shots | Groups | Cardio Tennis |**  
**Privates | Squad training**  
**Keystone Tennis | [www.keystonetennis.com](http://www.keystonetennis.com) |**  
**0407 476 041**



### Shepparton Badminton Association – 2015 Junior Competition

When: Friday afternoons 4pm to 6pm during terms 2 and 3.

Where: Shepparton Sports Stadium, Numurkah Road

For: Primary and Secondary School Students

Ability Level: Beginner to advanced players catered for.

Cost: \$80 includes all court fees and shuttle use.

Racquets: Bring your own or borrow one of ours – no charge

Teams: Enter a team of 4 or 5 players OR we will put you in a team.

Registration and Practice: March 20<sup>th</sup> and March 27<sup>th</sup> – 4pm to 6pm

Further Info: Phone Adrian on 58217948 or John on 58269557



## Could you be a permanent care parent?

There are a number of children supported by the Department of Health & Human Services who require a *family for life* as they are unable to live with their birth families. We are seeking committed and motivated people who would be interested in learning more about providing a permanent family for a child.

Assistance payments are made to the Permanent Care family to assist with the day to day expenses of caring for a child/young person. Assistance payments are considered to be a reimbursement for expenses and not an earned income.

We are also keen to speak with families who are particularly interested in caring for children up to the age of 10 years.

**Information sessions** are being held on:

Thursday 5<sup>th</sup> March 2015 at 6:00pm

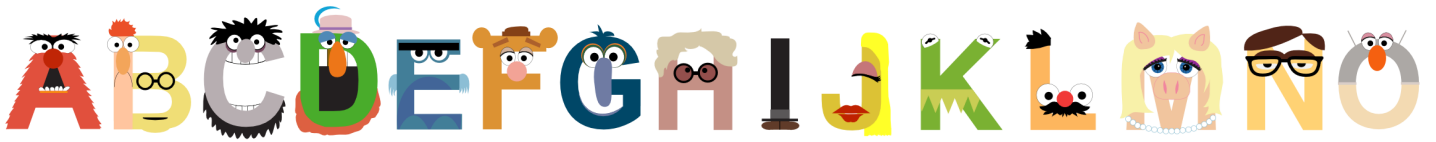
Department of Human Services, 163-167 Welsford Street, **Shepparton**

**For further information please contact:** Adoption & Permanent Care Program 5832 1559 or 5832 1713.

## GITAR FOR SALE

One of our ex-student's Brandon Murray has a blue Valencia child's guitar ... hardly played. Brandon is selling it for \$40.  
 Please see Miss H if you are interested.





# Classroom WRAP



## **F/1/2 Gamble**

*Foundation students are learning that we can write what we say.*

*Grade 1 students are learning to write on the dotted thirds.*



*Grade 2 students are working towards making their writing interesting for the reader.*



## **3 / 4 Baker**

*Last week the 3/4s were focusing on recounts. This week we are looking at descriptive writing.*



## **5/6 Zito**

*Our focus has been **descriptive writing** and here are some small samples.*



**Brooke** - The entrance to the great old house was blocked by two tall, iron gates covered with layers of ivy. Its hinges creaked noisily when you pushed them open. The long windy path was surrounded by oak trees so thick that they blocked out all the sunlight. At the end of the path there stood a great wooden mansion with smashed dirty windows and old rotten wood that only just clung onto its nails. The inside of this creepy house was unusually silent and eerie. Each and every room was covered with dust that looked like it hadn't been disturbed in a very long time. At the back of the dining room stood a long set of stairs that climbed upwards into the dark and very scary attic. The attic was small and very ramped by the piled up boxes on either side of the room. Looking out of the dust stained window gave you a view of the tops of the dark oak forest which looked especially creepy since you couldn't see anything below.



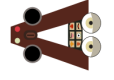
**Austin** - The sky was as blue as ocean water. The clouds are cream-white. The rumbling of thunder echoes above. The sounds of planes roaring like turbo engines. The whooshing of air like the wind in the desert. The birds are screeching as loud as jets.



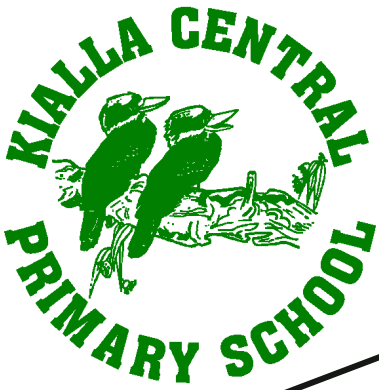
**Satinderjit** - There were tall buildings and even 3 tall towers holding a giant ship, which had thousands of people relaxing like nothing was in their way. As we got further there were more green plants, it was almost like it was a bushy jungle except cleaner. As soon as I got out of the bus it was so hot like a wildfire was on the trees, seriously you couldn't even open your eyes properly.



**Noah** - There once was a place called the velodrome that was 300 meters long. It had steep banks and long straights. There was lots of races on this track and lots of crashes. There is a big open grass place that is in the middle of the track. On top of the back turn there is a BMX track and seats around the track. The track is made of a light grey cement with lines on it. It had a lot of big and small cracks in it and little holes in it.



# 2015 Student Leaders



SCHOOL CAPTAINS  
Brooke & Thomas



ARCHER CAPTAINS  
Lachie, Kateesha & Riley



FAIRMAID CAPTAINS  
Mollie & Austin



MITCHELL CAPTAINS  
Xavier & Kasey



JUNIOR SCHOOL COUNCIL  
Back: Bridget, Molly, Megan,  
Harry, Elyse, Angus & Tayah



Good luck to all of our 2015 Student Leaders. I look forward to working with you this year! Miss H

# 2015 GUITAR & KEYBOARD LESSONS

Cliff Doornkamp will be conducting both guitar and keyboard lessons at Kialla Central Primary School in 2015. Lessons are held each Wednesday with individual lessons lasting 20 minutes. The cost of lessons is \$17.00 per lesson (payable at time of lesson).

For more information please contact Cliff Doornkamp on 0474 769 963.

Please return the form below as an expression on interest for 2015.

# 2015 GUITAR & KEYBOARD LESSONS



\_\_\_\_\_ Grade: \_\_\_\_\_

Parent / Guardian Name: \_\_\_\_\_

Contact phone number: \_\_\_\_\_



birthday parties | junior leagues | bumper leagues | social

OzTenpin

# STAR BOWL

Shepparton

112-122 Fryers Street  
Phone: 5821 5587

[www.oztenpin.com.au](http://www.oztenpin.com.au)

functions | fundraising events | family packages | book now!

## ACTIVE

ALL ABOUT YOU

**NO CONTRACTS  
NO JOINING FEE**

**\$1 A DAY MEMBERSHIP**  
MEMBERSHIP INCLUDES;  
\*Unlimited Group Fitness  
\*Unlimited Gym Use  
Only By Direct Debit:  
either \$16.20 a Fortnight or  
\$30.40 a Month

**ALL ACCESS PASS  
MEMBERSHIP**  
MEMBERSHIP INCLUDES;  
\*Unlimited Group Fitness  
\*1 Personal Training Session A Week  
\*Weekly Assessments  
\*Unlimited Gym Use  
Direct Debit or Up Front Payments  
\$46.70 a Fortnight

**58 222 588**

**MANISH GUPTA & ASSOCIATES**  
— CHARTERED ACCOUNTANTS —  
BUILD YOUR BUSINESS GROW YOUR WEALTH

- Accounts
- Superannuation
- Taxation
- Bookkeeping

31 Wyndham St, Shepparton  
P: 5831 7364 M: 0450 276 336

'SMALL BUSINESS SPECIALISTS'

## ALAN McNEILL

### Wholesale Confectionery

ABN 34 891 297 987

**Mobile: 0417 034 163**  
**A/hrs: 58 222 987**